

# Let's teach my

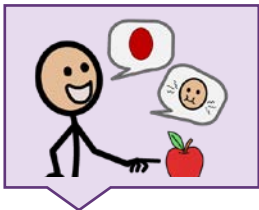
This is **MY** toy! It's **MY** turn!

The word **MY** is a powerful term to indicate possession. Children starting using the word **MY** by 27-30 months of age. We typically use the word **MY** when describing our own things, like "**MY** keys" or "**MY** shoes", but could describing anything familiar to us, like "**MY** family" or "**MY** birthday party."



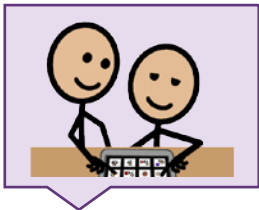
## FIND

Find the word in the vocabulary. **MY** is a pronoun, so it will typically be a yellow word. It is often located on the HOME page of many vocabularies. If you can't find **MY**, use the Word Finder feature to learn where it is. If it is not in the vocabulary, you may want to add it.



## INTRODUCE

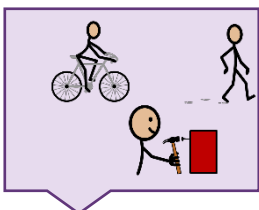
Use **MY** in context and try to explain it at the learner's level. Modeling, touching the word in the vocabulary as you say it, may help. Here's an example: "**MY** means it belongs to us. It's **MY** house or **MY** snack."



## MODEL

Model the word throughout the day, touching **MY** in the vocabulary anytime you say it.

"**MY** turn." "This is **MY** drink." "**MY**, you are excited." "Where's **MY** keys?" "Why do you have **MY** hat?"



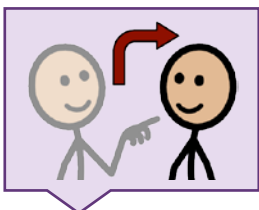
## ENCOURAGE

Create activities to provide lots of models and practice with **MY**.

Book: *Are You **MY** Mother?* By Dr. Seuss

Game: Any with turn taking, "**MY** turn."

Activity: Show and Tell. "This is **MY**..."



## EXPECT

Create opportunities for the learner to say the word. Make sure to wait, and look so they know it is expected.

Introduce yourself to new people, "**MY** name is.."

Add **MY** for clarification, "**MY** turn" or "**MY** cracker."