

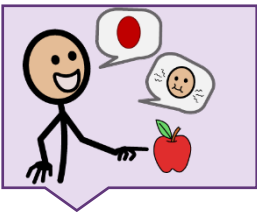
Let's teach then

THEN might be a challenging word to teach, but we use **THEN** a lot. First, we need to do our work, **THEN** we can play. We use **THEN** to determine the order of events or tasks. The more we use **THEN**, the more opportunity for the learner to understand and use **THEN** too! First, we teach, **THEN** they understand and **THEN** we can use it. We say things like "It was raining cats and dogs, **THEN** the sun came out and **THEN** we saw a beautiful rainbow."



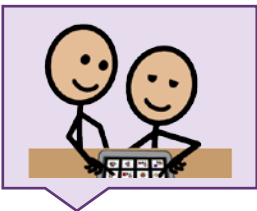
FIND

Find the word in the vocabulary. **THEN** is an adverb, so it will typically be located on the "Extra Words" page of many vocabularies. If you can't find **THEN**, use the Word Finder feature to learn where it is. If it is not in the vocabulary, you may want to add it.



INTRODUCE

Use **THEN** in context and try to explain it at the learner's level. Modeling, touching the word in the vocabulary as you say it, may help. Here's an example: **THEN** indicates a certain time or order in which you can do something. "Finish your dinner, **THEN** you can have dessert."



MODEL

Model the word throughout the day, touching **THEN** in the vocabulary anytime you say it.

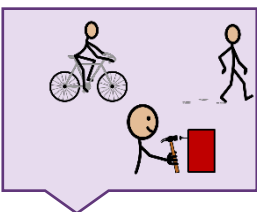
"I'll go first, **THEN** you can go."

"That was **THEN**, this is now!"

"**THEN**, what will you do?!"

"Tell me what you saw first, **THEN** what was second."

"He talked to Jim, Charlie, **THEN** me."



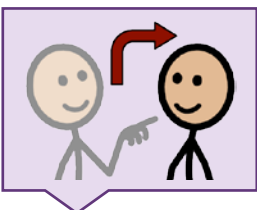
ENCOURAGE

Create activities to provide lots of models and practice with **THEN**.

Book: *Then and Now* by Tracy Sato

Song/Nursery Rhyme: Who stole the cookie from the cookie jar? "not me!" "**THEN** who?"

Activity: Sequence story cards. What happened first, **THEN** what happened, **THEN** what happened. etc



EXPECT

Create opportunities for the learner to say the word. Make sure to wait and look at them so they know it is expected.

Review the daily schedule: First-**THEN**

Tell the order of game players. First Don, **THEN**...

Write a story about growing a plant. First you plant a seed, **THEN** you water it, etc.